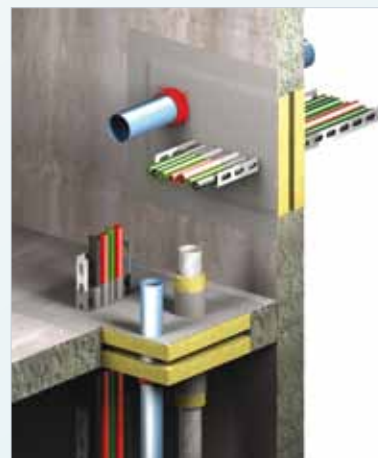




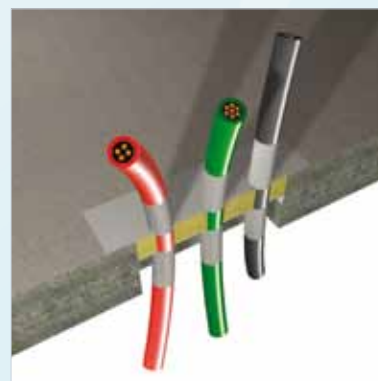
Basic Requirements for Creating a Penetration

Determine the required period of fire resistance of the element, and for loadbearing structures, ascertain the required load. The area to be sealed requires the same fire resistance as the complete floor or wall construction. In order to ensure the stability of the services is maintained under fire conditions, we recommend that all services must be adequately supported at maximum 250mm away from the wall or floor on both sides of the penetration. System fixings, impact protection and suspension elements must be steel. Monal alloys, aluminium etc are not permitted. Accessories such as guard-rails, steel angles, threaded rods. Suspension elements etc. must only be fixed to adjacent solid substrates such as concrete or masonry.



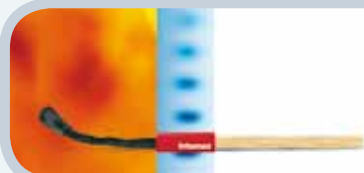
General Information

- ⇒ Stir Intumex® AS well (we recommend a mechanical mixer);
- ⇒ Intumex® AS can be diluted (maximum 0.5 litre clean water to each 12 kg container);
- ⇒ Intumex® AS can be applied with a brush, roller, spatula or airless device;
- ⇒ Once opened containers should be fully used as soon as possible. Reseal containers properly after use;
- ⇒ Drying time: approx. 8 hours at 20 °C and a relative humidity of 65 % for 1 mm;
- ⇒ Clean tools with water after use;
- ⇒ 1 mm dry-film thickness is equivalent to 1.4 mm wet-film thickness (approx. 1900 g/m²);
- ⇒ Overpainting is possible; adhesion and compatibility must be checked.

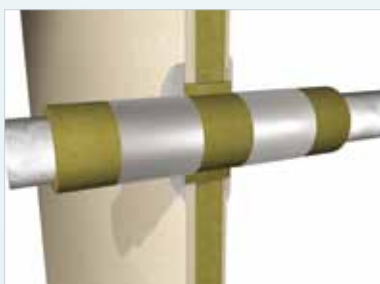


Application Conditions

- ⇒ Minimum +5 °C, maximum +40 °C for both substrate and ambient temperature;
- ⇒ Relative humidity of more than 65% will result in extended drying times;
- ⇒ Substrate must be free of oil, grease and dust;
- ⇒ Use water to dampen or water-diluted Intumex® AS and act as a primer for absorbant substrates.

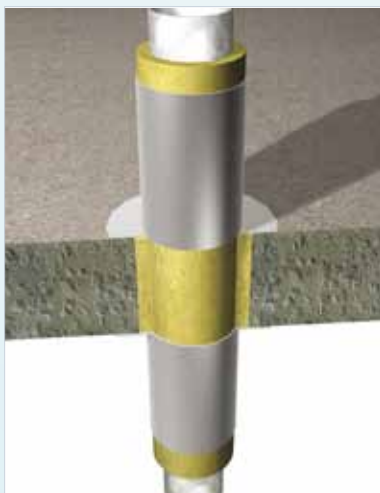


Intumex® AS - Installation Guidelines



Installation: Wall Condition

- ⇒ Clean opening and penetrating services;
- ⇒ Mask out the working area on the wall and services with tape;
- ⇒ Cut the mineral wool panels exactly to size (melting point: $\geq 1000\text{ °C}$);
- ⇒ Pre-coat the opening and services with Intumex® AS, as well as the edges of the mineral wool;
- ⇒ Insert mineral wool panels;
- ⇒ Fill joints with Intumex® AS;
- ⇒ Apply final correct thickness of Intumex® AS to mineral wool and services;
- ⇒ Remove tape;
- ⇒ Repeat the same steps on the opposite side, if necessary;
- ⇒ Fix identification label.



Installation: Floor Condition

- ⇒ Clean opening and penetrating services;
- ⇒ Insert an appropriate approved metal grid as foot traffic protection (below the mineral wool panels), where deemed necessary;
- ⇒ Mask out the working area on the floor and services with tape;
- ⇒ Cut the mineral wool panels exactly to size (melting point: $\geq 1000\text{ °C}$);
- ⇒ Pre-coat the opening and services with Intumex® AS, and the edges of the mineral wool;
- ⇒ Insert mineral wool panels and fix to grid (thickness of steel wire $\geq 1.5\text{ mm}$);
- ⇒ Fill joints with Intumex® AS;
- ⇒ Apply final correct thickness of Intumex® AS to mineral wool and services;
- ⇒ Remove tape;
- ⇒ Fix identification label.



For additional information on how and where to use this product please refer to our systems database www.intumex.info, or visit our website at <http://www.intumex.at>

Installation: Multi-penetrations; Wall and Floor Condition

When cables, cable transport systems, metal pipes, plastic pipes and ventilation services all pass through one penetration, additional measures covered by tested and certificated systems are required. Please refer to the relevant test reports or to our database regarding the additional measures – e.g. extended insulation, fire stopping collars or claddings.

Adding New Services to Soft Penetrations

The addition of new services through soft penetrations is permissible if all the above instructions are followed (coating the edges, service penetration gaps sealed accordingly). Fill joints.